



**STATE OF WEST VIRGINIA  
DEPARTMENT OF HEALTH AND HUMAN RESOURCES**

**Joe Manchin III  
Governor**

**Patsy A. Hardy, FACHE, MSN, MBA  
Cabinet Secretary**

October 19, 2009

TO: RESA Coordinators  
TSN Program Directors  
EMS Instructors  
EMS Administrators

FROM: March Tucker, Jr.  
Regulatory Section Chief

The WVOEMS has been asked to provide an alternative option to the National Registry exam for EMT-Basics. In order to meet this goal, a new "State Option" exam will be available for EMT-Basic students who qualify to sit for their initial certifying exam. The following policy explains the options available to the student and the administration process for both exams. The policy is effective October 23, 2009.

If you have any questions, please feel free to contact me at (304) 558-3956, and I will be glad to assist in any way possible.

March Tucker, Jr.  
Regulatory Section Chief  
WV OEMS

---

***BUREAU FOR PUBLIC HEALTH***  
***State Trauma and Emergency Care System***  
**Office of Emergency Medical Services**  
350 Capitol Street, Room 425  
Charleston, West Virginia 25301-3714  
[www.wvoems.org](http://www.wvoems.org)

Telephone: (304) 558-3956

Fax: (304) 558-8379




## EMT-Basic Certification Examination Policy

- I. Emergency Medical Technician-Basic candidates have two options for examination leading to qualifying for certification in West Virginia.
- A. Option A is to successfully pass the National Registry of Emergency Medical Technicians' certification cognitive examination.
  - B. Option B is to successfully pass the State of West Virginia EMT Basic cognitive examination.
  - C. Both options require successful completion of a skills examination.
- II: General Candidate Registration and Application Procedures:
- A. Prior to completion of 12 hours in an original EMT-B course all candidates must:
    - 1. Be enrolled in the WV EMS Credentialing Information System.
      - a. If currently or previously affiliated with an EMS agency, review/confirm profile online. (Access via link at [www.wvoems.org](http://www.wvoems.org)).
      - b. If never affiliated with an EMS agency, create a profile online. (Access via link at [www.wvoems.org](http://www.wvoems.org)).
    - 2. Apply for certification in a format specified by WVOEMS.
    - 3. Declare their exam option election.
  - B. Prior to completion of 24 hours in an original EMT-B course, candidates must:
    - 1. Option A (National Registry examination):
      - a. Submit non-refundable fee of \$75.00 in a manner specified by WVDHHR - Bureau for Public Health.
      - b. Submit fingerprint cards to the West Virginia State Police.
      - c. Must follow current NREMT guidelines for exam registration and fee payment to that organization.
    - 2. Option B (State examination):
      - a. Submit non-refundable fee of \$75.00 in a manner specified by WVDHHR - Bureau for Public Health.
      - b. Submit fingerprint cards to the West Virginia State Police.
- III. Option A (National Registry) Cognitive Examination:
- A. Consists of a computer adaptive examination.
  - B. Successful completion is determined on an individual basis.
  - C. Must be scheduled at approved exam sites in accordance with NREMT policies and procedures.
  - D. Pay fees in accordance with NREMT policies and procedures.
  - D. Multiple attempts to complete the exam will be managed in accordance with NREMT policies and procedures.

Certification Policy 2.11.09

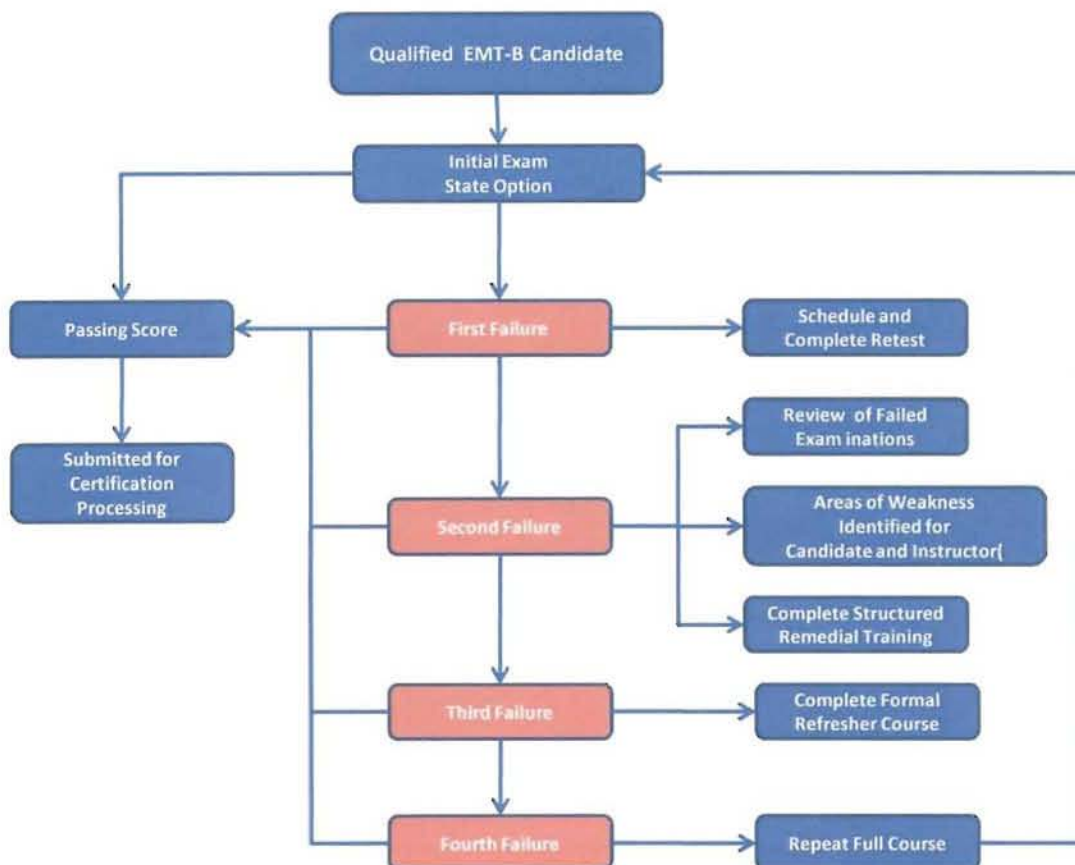
Effective Date: 10/23/09  
Revised Date: 11/9/09

Approved: 



## EMT-Basic Certification Examination Policy

- IV. Option B (State) Cognitive Examination:
- A. Consist of 100 multiple choice questions.
  - B. Successful completion is a score of 70% or higher.
  - C. Will be scheduled at times and locations determined by WVOEMS.
  - D. Will be given concurrent with skills examinations whenever possible.
  - E. Candidates must:
    - 1. Have completed an approved EMT-B course on or after April 11, 2009.
    - 2. Be pre-registered with WVOEMS prior to sitting for the exam.
    - 3. Have paid all required fees.
    - 4. Continue to meet all other eligibility requirements.
  - F. Multiple attempts to complete the exam will be managed as follows:



Certification Policy 2.11.09

Effective Date: 10/23/09  
Revised Date: 11/9/09

Approved: